



Better together for Children...



Walsall Council

NOVEMBER 2014

Children's Services – Supporting Children with Special Educational Needs and Disabilities

Changes for children and young people with special educational needs and disabilities from September 2014

Inside This Issue

1. Co-Production Workshop
2. Walsall Local Offer You Said – We Did
3. Children/Young Person feedback on the Local Offer
4. Independent Supporter
5. New Paperwork for Schools and Settings
6. Transition Process for transferring Statements into Education Health and Care Plans

Review of SEN Provision in Walsall

We are reviewing our SEN provision in Walsall. All of our special schools are currently either good or outstanding which supports Walsall Children's Services vision that all children will attend at least a good school by September 2016. In order for us to continue to provide the very highest quality education we need to work collaboratively with our stakeholders/ partners to match the best provision with the needs of the learner.

Meetings have been arranged for stakeholders/parents/carers. If you would like details of these meetings or if you want to give us your feedback, the consultation documents can be found at:

http://cms.walsall.gov.uk/sen_and_disabilities.htm

Co-Production

Co-production uses the skills, knowledge, resources and experience of individuals, communities, practitioners, policy makers, and voluntary agencies that together can act as the catalyst for change. Everyone involved hopefully has the same aims... to improve the life chances and outcomes for children and young people with SEND.

We will be running a workshop to explore co-production in the context of the SEN Reforms that raise the bar for how professionals, families and young people work together. Through discussion, presentation, activities and film we will highlight the implications of the Children and Families Act and the SEND Code of Practice, identifying emerging good practice and planning for full implementation of co-production in Walsall.

Aims of the workshop:

- To provide participants with tools, tips and practical examples of co-production with key stakeholders focusing on engagement with families, children and young people
- To provide an opportunity for sharing learning, experience and practice

The workshop will cover:

- The legislative background and expectations
- What is co-production and why is it important?
- Co-production and culture change
- Enabling participation for *all* families and young people
- Co-production across services and teams
- Resources



Co-production:

Families and professionals working together

Date: Friday December 12th 2014

Time: 10.00am to 2pm
Large Hall – Education Development Centre



To book a place at this workshop contact us on 01922 686375





All Services are currently compiling their draft Local Offer

Local Offer update.....

Walsall Local Offer – Walsall SEND Local Offer is accessible from Walsall Council website or by clicking [here](#).

The current website is an interim one. We will be transferring information over to our new website early in 2015. Please take a look at the website and give us your feedback by using the feedback button at the bottom of the website screen. Comments we have received so far are shown below.

“You Said” 	“We will” 
Many parents and young people don't like the use of the phrase “disabled children” and prefer “children with disabilities”.	We will change our main pages to reflect this preference and where this appears in service or team local offers we will forward your comments to that service.
It's quite wordy and not very young person friendly. Some LA's have done a separate young persons and parents/carers version of the LO.	We are working on our new website and will attempt to make the website open and accessible to children/young people and parents.
Some LA's have done a brief overview of services and a 'read more' button where there is more detailed information	The new website will provide this.
The category buttons are at the bottom but I think they should be at the top as I was pressing the kids and teens tabs at first and going off the Local Offer.	Again when we move over to the new website it will look completely different, our front page will look similar to the diagram below.



Children/Young Person feedback on the Local Offer

The Local Offer aims to provide a single, accessible picture of services across education, health, social care and the voluntary and community sectors, to enable children and young people and their parents to have greater choice and control about provision in their area.

On 27th October thirteen young people with a range of SEND from the Walsall borough were invited to give feedback on the existing Walsall Local Offer Website and have a preview of the proposed "Open Objects" site. All of those involved were aged from 14 up to 23 years old (the majority being 14-18).

Young People searched for information which was pertinent to them at the time and dependent on their age, for example younger children wanted help and advice about leisure activities and college where older young people wanted to find information such as support to find employment or housing options. Generally the Open Objects Website received good praise and young people felt positive about the future look of the site; they just wanted to ensure that the search function held enough relevant information to yield useful results, reassurance that jargon and information which was too wordy reduced. They liked the idea of introducing more pictures to make the site more user friendly.

The information will be fed back to the Local Offer Working Group and the Whole Life Planning Board as part of the on-going consultation process. The SEND Post 16 Project Team has arranged to consult other support groups and young people over the coming months to gather their views on the Local Offer and Website. Findings will be published in the SEND Newsletter and on the Website. Work continues with multi-agency partners to increase the Offer's online information resource.



Independent Supporter

The Royal Mencap Society have a team of 5 Independent Supporter's based across the West Midlands who will be on hand to support local families, both parents and young people on one to one basis with the Education Health and Care assessment and the development of the EHC plan.

For more information about this service please contact 0808 808 1111

New Paperwork for Schools and Settings



New paperwork for schools and settings to use to replace IEPs has been developed and consulted on with SENCOs.

The paperwork consists of a Pupil Passport and Assess, Plan, Do, Review record for use at the Early Response stage, and Pupil Profile and Assess, Plan, Do, Review, Record for use at the SEN support stage.

Copies of the new paperwork will be put on the Walsall Link for schools to download.

If you have any queries regarding the new paperwork please contact Margaret Wiredu, Advisory Support Team Manager, on 01922 686501 or e-mail: Margaret.wiredu@edu.walsall.gov.uk

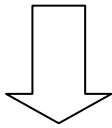
Transition Process for transferring Statements into Education Health and Care Plans

Further to the article in our September newsletter and details of when statements will be transferred to Education, Health and Care Plans. Below is an overview of the process. Schools will be given additional guidance for conducting transfer reviews.

Overview of the Transfer Process

The transition will be completed within a maximum of 14 weeks

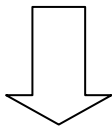
Stage 1



Person Centred Planning. SEND Keyworker meets with parent to carry out person centred planning meeting to establish the views of the parent and child or young person. Mostly likely carried out in school.

Max 2 weeks

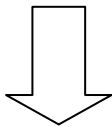
Stage 2



Transfer Review Meeting to be arranged. Pre populating the EHC Plan as far as possible using Parts 2 of the statement and recent annual review reports. This will enhance the annual review meeting and must review Parts 2 and 3 of the current statement and evidence any changes requested and potential outcomes are to be discussed and agreed with parents. Consideration to the continuation of the statement will also be given.

Max 2 weeks

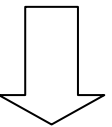
Stage 3



EHC Assessment. The LA will continue EHC assessment using the information provided by the transfer review meeting. If further advice is required for education, health or care professionals this will be requested and must be returned within 6 weeks.

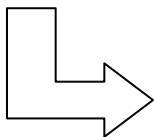
Max 8 weeks

Stage 4



Decision. Yes to transfer to an EHC Plan – Draft plan is sent to the parents for final approval. No to transfer to an EHC Plan – Provision Plan is sent to parents which details the support available without an EHC Plan.

Max 2 weeks



Final EHC Plan

We hope the information provided in our newsletters is useful to you, however if you still have a question that you do not have the answer to e-mail:-

senconsultations@edu.walsall.gov.uk

Our next newsletter will be sent out in January 2015. We are keen to learn how the new EHCP process is for parents. If your child receives an Education, Health & Care Plan in November/December, or your child's statement is converted to an EHCP please let us know how the process was for you.